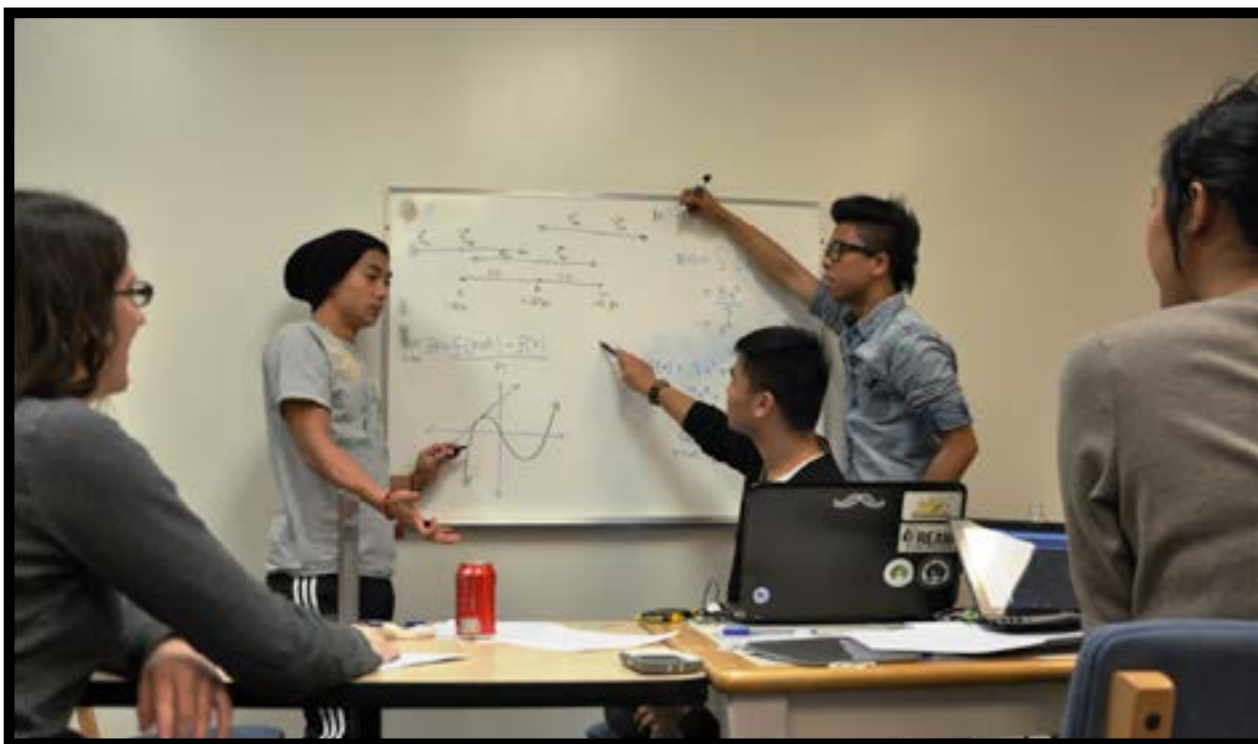


## JOIN US IN FRONT ROYAL, VIRGINIA, FOR THE MID-ATLANTIC REGIONAL LEARNING ASSISTANT WORKSHOP

**Date: February 21-23 2015**

**Location: Smithsonian-Mason School of Conservation**



### Participate in sessions on:

- Starting an LA program
- Essentials of an LA program
- How to run an LA seminar
- Conducting weekly mentor sessions
- LA-run oral assessments
- 2YC collaborations with universities
- Recruiting
- Supporting faculty and more.

For more information contact: Dr. Mary Nelson [mnelso15@gmu.edu](mailto:mnelso15@gmu.edu) OR Dr. Julia Nord [jnord@gmu.edu](mailto:jnord@gmu.edu)

Organized by faculty at George Mason University, the University of Colorado, Boulder, and the International LA Alliance with support from:



COLLEGE OF SCIENCE  
**STEM**  
ACCELERATOR



Learning Assistant (LA) Model  
UNIVERSITY OF COLORADO BOULDER

